

ALLScanner

VXDIAG

User Manual

用户手册



V1.1 / 2015

General Information



Please review the product manual carefully, handle the product in strict accordance with the manual.

Welcome To Use

Thanks for purchasing a product from ALLScanner Tech Co., Ltd. This manual provides a comprehensive overview and standard configuration for users.

This manual describes product information, hardware connection, software installation and usage etc significant information. Please read this instruction manual and familiarize yourself with your device before operating. The manual only states the operational method of use, specific vehicle diagnosis and maintenance please refer to original maintenance manual. ALLScanner reserves the rights to make any change to product designs and specifications without notice.

Copyright

Copyright © 2014 by ALLScanner Tech Co., Ltd. All rights reserved. No part of this publication may be reproduced, stored in a retrieval system, or transmitted in any form or by any means, electronic, mechanical, photocopying, recording or otherwise, without the prior written permission of ALLScanner.

Trademark

ALLScanner® is a registered trademark of ALLScanner Tech Co., Ltd.

VXDIAE is a registered trademark of ALLScanner Tech Co., Ltd.

In addition to the above-mentioned, All other names of actual companies and products mentioned herein may be the trademarks of their respective owners.

Product Introduction

Profile

Brand-new design VXDIAG, first integrated the three automotive industry standards, supports all major vehicle bus protocols, have strong compatibility and it is the best equipment to realize OEM level diagnostic functions.

Features

One Device to Support Multiple OEM Diagnostics

- Achieved the world's most of brand OEM level vehicle diagnostic, One device can replace mass expensive OEM tools
- Advanced Diagnostics fully consistent with the OEM tools, even beyond the OEM tools
- One-click to install OEM support driver and update online, Easy to use

Brand-New Design VXDIAG Hardware

- Equipped with high-speed processor VXDIAG is a high-performance Vehicle Network Interface
- Support 4 x CAN BUS and 2 x K-Line/L-Line, support multi-protocol high-speed and concurrent communication
- With the innovation design of OBD-II intelligent bus multiplex hardware, one device can diagnosis all models and fully meet the future demand for complex vehicle communication.
- Support 24V heavy-duty and diesel vehicles communication
- Rugged design can be used in a variety of harsh environments

Compatible with Three Automotive Industry Standard

- SAE-J2534-1/2 Pass-Thru Driver with EURO 5

- ISO-22900-1/2 MVCI with D-PDU Driver
- TMC RP-1210A/B/C Heavy Duty VDA Driver

J2534 OEM Level ECU Reprogramming Function

- ECU software update and calibration
- ECU replace flash and programming

Automotive Vehicle Diagnostic Supported

#	OEM	Diagnostic Software	Compatible
1	PASSTHRU	SAE-J2534-1/2 Pass-Thru	YES
2	PORSCHE	Porsche PIWIS-II Tester	YES
3	TOYOTA	TOYOTA Techstream TIS	YES
4	HONDA	HONDA Diagnostic System HDS	YES
5	SUBARU	SUBARU Select Monitor SSM	YES
6	VOLVO	VOLVO VIDA	YES
7	JLR	Jaguar & Land Rover SDD	YES
8	CHRYSLER	Chrysler wiTECH Diagnostic	YES
9	GM	GM GDS2	YES
10	GM	GM Tech2Win	YES
11	FORD	FORD IDS	YES
12	MAZDA	MAZDA IDS	YES
13	KIA	KIA GDS	YES
14	HYUNDAI	HYUNDAI GDS	YES
15	MMC	Mitsubishi MUT-III	YES
16	NISSAN	* NISSAN Consult-III Plus	YES
17	SUZUKI	* Suzuki SDT-II	YES
18	VAG	* VW & AUDI ODIS	YES
19	BMW	* BMW RHEINGOLD ISTA/D	YES
20	BENZ	* BENZ XENTRY	YES
21	FERRARI	* Ferrari DEIS Tester	YES
22	MASERATI	* Maserati EASY Diagnosi	YES

Heavy Duty Vehicle Diagnostic Supported

#	OEM	Diagnostic Software	Compatible
1	VOLVO	Volvo/Mack PTT & VCADS Pro	YES
2	CUMMINS	Cummins INSITE	YES
3	CAT	CAT ET Electronic Technician	YES
4	DETROIT	Detroit DDDL & DDRS	YES
5	HINO	HINO Diagnostic eXplorer	YES
6	ISUZU	ISUZU IDSS	YES
7	NISSANUD	Nissan UD	YES
8	ALLISON	Allison DOC	YES
9	BENDIX	Bendix ACOM	YES
10	EATON	Eaton ServiceRanger	YES
11	FREIGHTL	Freightliner ServiceLink	YES
12	INTERNAL	International ServiceMAXX and more...	YES
13	WABCO	WABCO Toolbox	YES
14	PERKINS	Perkins OLYMPIAN EST	YES
15	MAN	*MAN-Cats II	YES
16	SCANIA	*Scania SDP3	YES
17	JCB	*JCB ServiceMaster	YES
18	DETUZ	*DETUZ Serdia	YES

Vehicle Protocols Coverage

Supported Automotive Protocols	ISO-9141 K-Line ISO-14230 K-Line ISO-15765 CAN SAE-J1850-VPW (GM Class2) SAE-J1850-PWM (FORD SCP) ISO-11898-2 DWCAN ISO-11898-3 DWFTCAN SAE-J2411 Single Wire CAN (GMLAN) VAG TP16 CAN VAG TP20 CAN (SAE-J2819) VAG KW81 (SAE J2818)
--------------------------------	--

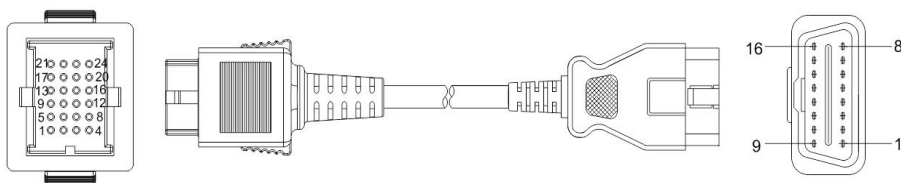
	SAE-J2610 SCI (Chrysler) SAE-J1567 CCD BUS (Chrysler) SAE-J2740 GM ALDL SAE-J2809 (HONDA DIAG-H) NISSAN DDL UART with CLOCK BMW DS2 FORD UBP
Supported Heavy-duty Protocols	CAN125/CAN250/CAN500/CAN1000 SAE-J1939 CAN SAE-J1708/J1587 On RS485 CAT DATALINK (Caterpillar) ATA DATALINK (Caterpillar)

Specifications

ITEM	DESCRIPTION
CPU	32bit 180MHz ARM CPU
Storage	1MByte
Cable Interface (PC)	USB2.0
Network Interface (Optional)	LAN 10/100M Ethernet
Wireless Interface (Optional)	WLAN 802.11 b/g/n Wi-Fi
Diagnostic Interface	24PIN highly reliable and easy-swap interface to OBD-II 16PIN
Indicator Light	4 LED: Power, Wireless, Host and Vehicle.
Power	Vehicle power input: DC 9V-36V Compatible: 12V&24V
Power Dissipation	2W
Size	L x W x H = 175 x 110 x 45 (mm)
Weight	Device Weight: 0.6 Kg Package Weight: 2.3 Kg
Shell	Aluminum metal & Rugged plastic shell

Working Temperature	-20 ~ +70 °C
Storage Temperature	-40 ~ +85 °C
Standard Certification	Certification of Euro CE and US FCC

Interface



CON24	Default	OBD-II
1	Signal	1
17	Signal	2
2	Signal	3
24	GND	4
24	GND	5
3	Signal	6
4	Signal	7
5	Signal	8
6	Signal	9
18	Signal	10
7	Signal	11
8	Signal	12
9	Signal	13
10	Signal	14
11	Signal	15
16	VBAT	16

OBD-II Supported Vehicle Protocols Coverage (Can be switched by software)

	1	2	3	6	7	8	9	10	11	12	13	14	15
HSCAN				H								L	
PSCAN	H/L	H/L	H/L	H/L	H/L	H/L	H/L	H/L	H/L	H/L	H/L	H/L	H/L
SWCAN	X	X	X	X	X	X	X	X	X	X	X	X	X
FTCAN	H/L	H/L	H/L	H/L	H/L	H/L	H/L	H/L	H/L	H/L	H/L	H/L	H/L
PWM		H						L					
VPW		X											
KBUS1	X	X	X	X	X	X	X	X	X	X	X	X	X
KBUS2	X	X	X	X	X	X	X	X	X	X	X	X	X
Analog	X	X	X	X	X	X	X	X	X	X	X	X	X
J1708		H						L		L	H		

H: High for Differential signal.

L: Low for Differential signal.

H/L: High or Low for Differential signal.

X: Supported signal.

Product Overview



Device Operation Status (Red)



Wireless Network Status (Blue)



Host Communication Status(Blue)



Vehicle Communication Status(Blue)

Product Package



VCI Device



USB LAN cable



OBD-II diagnostic cable



Tool box and package



CD, User Manual, Fix Card

Software Setup

Computer Requirements

- Processor: Pentium 4 / 1.6GHz+.
- Memory: 2G Bytes or more.
- Hard disk: 40G or more.
- Display: Resolution 1024x768 or higher.
- Network interfaces: LAN 10 / 100M or 802.11b / g.
- Communication Interface: USB2.0 or USB3.0
- Operating System: Windows XP / Vista / Win7 / Win8 / Win8.1.

Software Installation

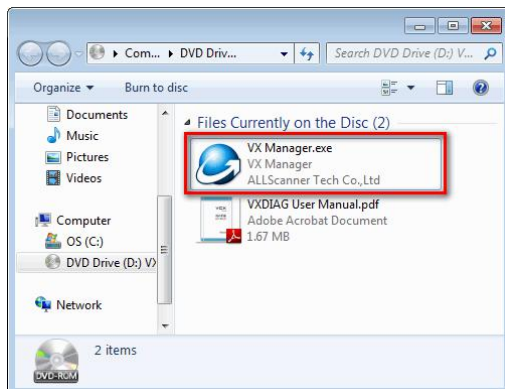
Before start to diagnose vehicle, you have to install VX Manager and driver which are stored in the CD-ROM, or you can browse <http://www.vxdiag.net> to download the newest setup files.



Please close the anti-virus software and run setup program with administrator user.

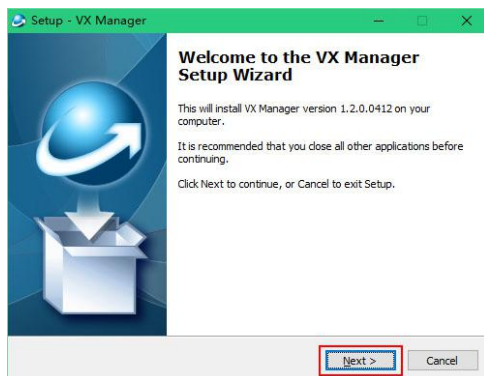
1

Run VX Manager.exe to setup



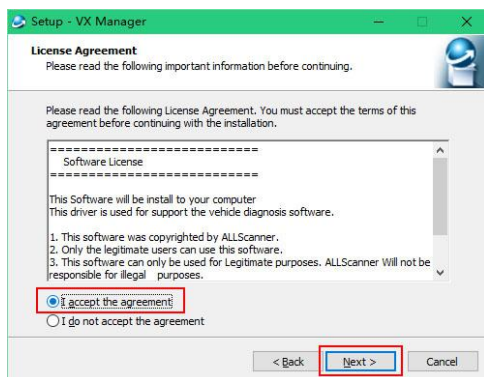
2

Click [Next]



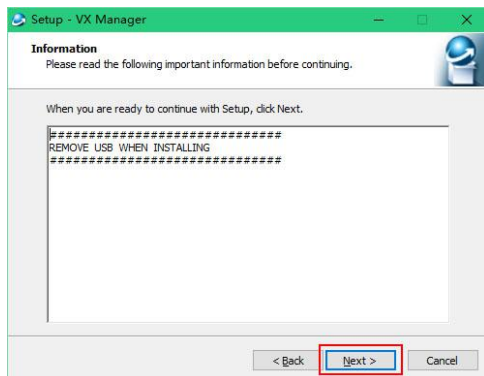
3

Select [I accept the agreement], then click [Next]



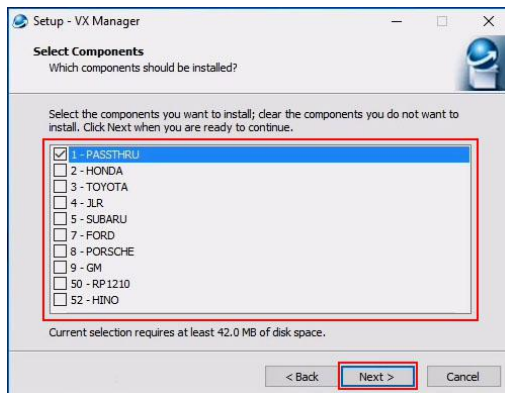
4

During installation, disconnect USB cable to the computer, then click [Next]



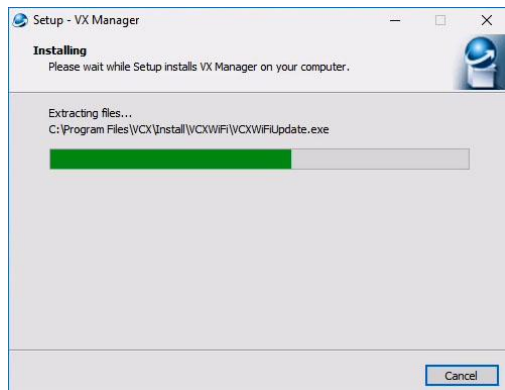
5

Select the OEM Drivers
you want to install.
Click [Next]



6

Software Installing.....



7

VXDIAG SDK Driver
installing.....



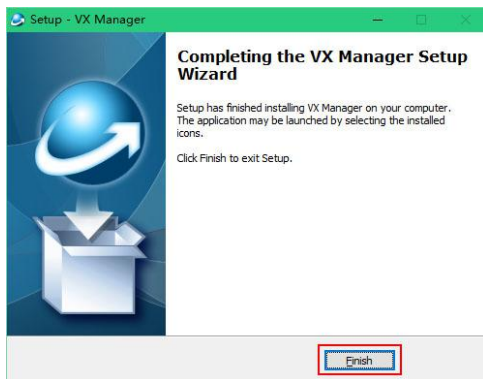
8

OEM Driver installing.....
Install Completed, then
click [Close]



9

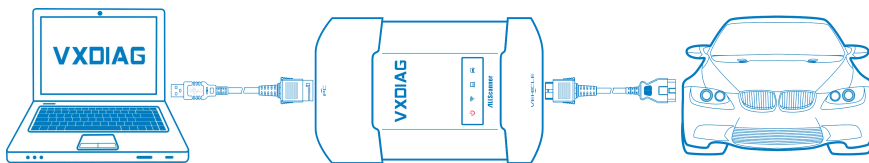
Setup complete. The
shortcut will create on the
desktop



Start to Use

Hardware Connection

Connect OBDII cable to the vehicle 16pin diagnostic port, and USB cable to the computer.

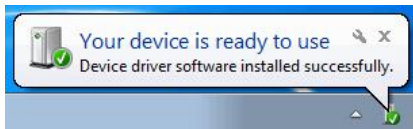


After device boot complete, the power led will flash, and the buzzer will prompt.

Install USB driver for Windows 7 / 8 / 8.1 / 10

The first time to connect USB cable to the computer, Windows will prompt [Installing device driver].

Windows automatically complete driver installation.



Install USB Driver for Windows XP

The first time to connect USB cable to the computer, Windows will prompt [Found New Hardware],



Please follow these steps to complete USB driver installation.

1

Select [No, not this time], then click [Next]



2

Select [Install Driver Automatically], then click [Next]



3

Please wait while the wizard installs the software



4

Complete Found New Hardware Wizard, click [Finish]



Thereafter, it will pop up the second time [Found New Hardware Wizard], same as above.

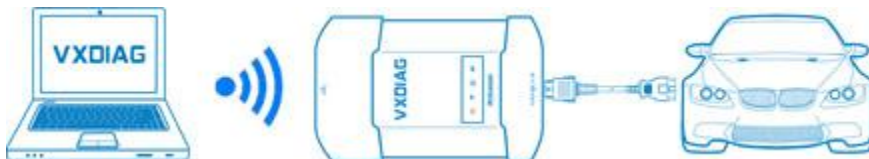
The USB Driver installed completed:



After USB driver is successfully installed, PC LED will flashing.

WiFi Connection

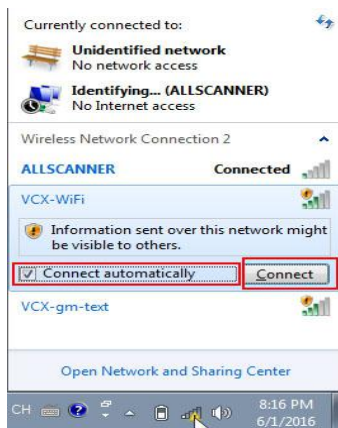
Connect OBDII cable to the vehicle 16pin diagnostic port, and computer connect to the device through WiFi.



Please follow these steps to complete USB driver installation.

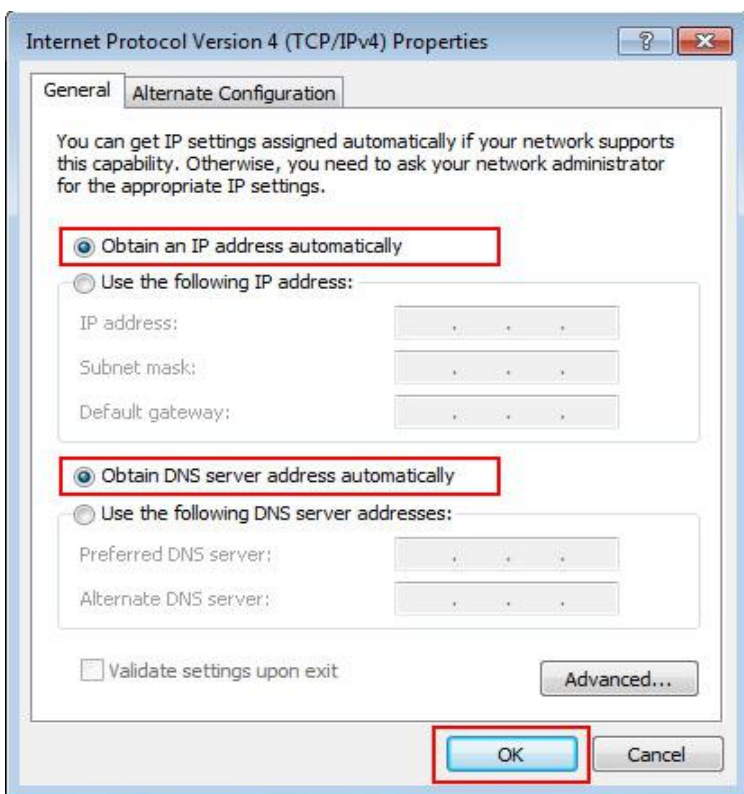
1

Click VCX-WiFi, and check [Connect automatically] , then click [Connect]



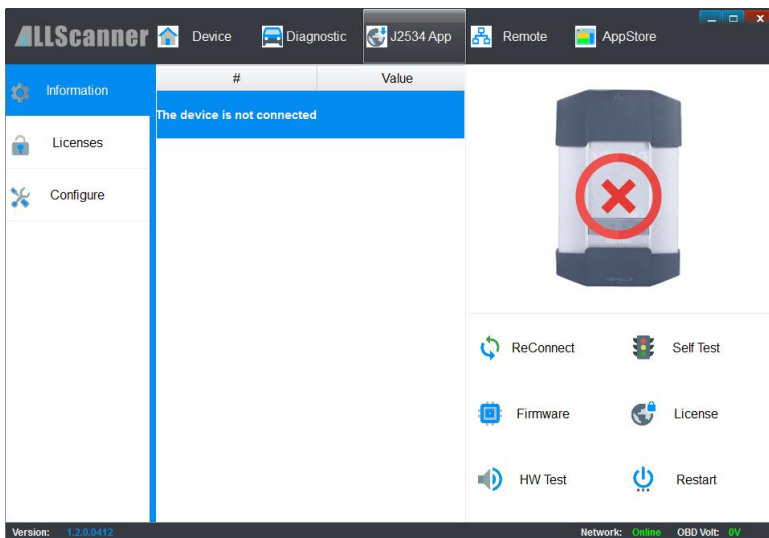
2

Setting obtain an IP address automatically



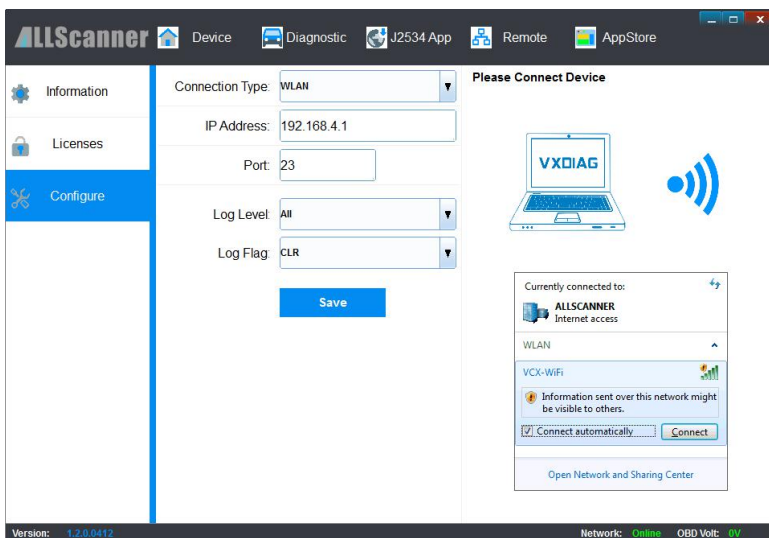
3

Double click VX Manager on the desktop, Start program



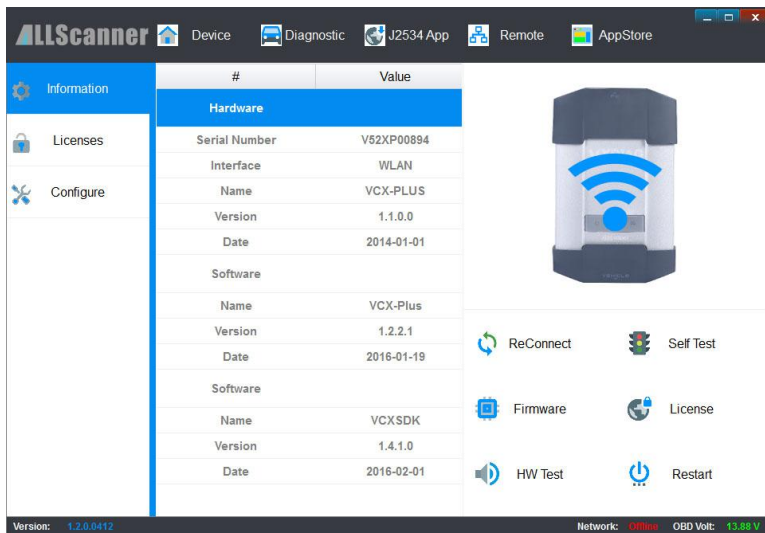
4

Select [Device], and Click [Configure] , Connection Type select [WLAN] , then click [Save]



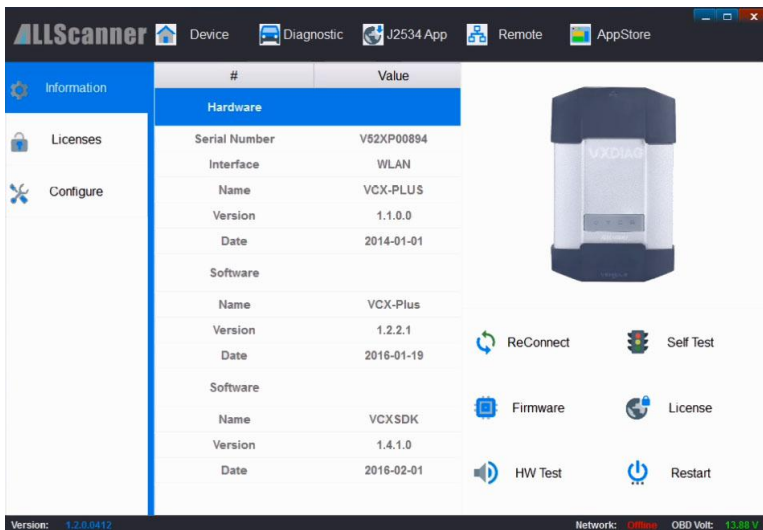
5

Double click VX Manager on the desktop, Restart program
Computer have been connected to the device through WiFi.



VX Manager

Please make sure the device is connected. Run VX Manager, The information of device will be displayed in "Device Manager" .



Basic Functions



ReConnect To establish a connection with the device



Firmware Upgrade device firmware from server



License Update device license from server



Restart Reset device and start to run



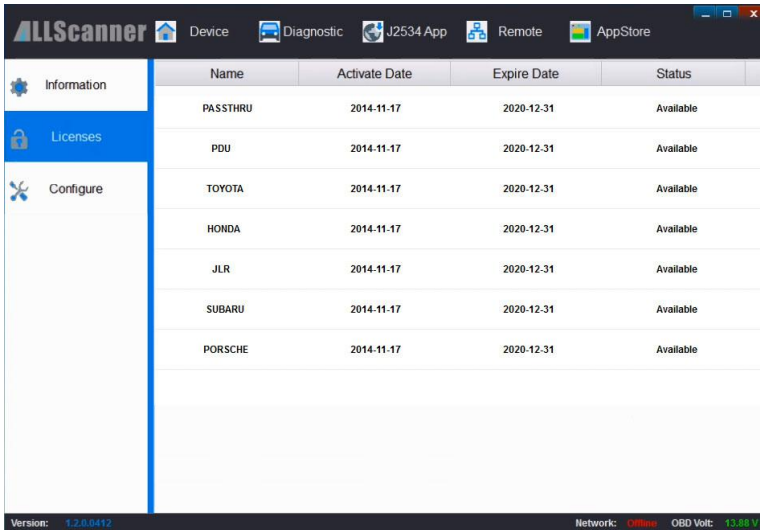
Self Test Run device test program and report



HW Test Device LED flashing and buzzer beep

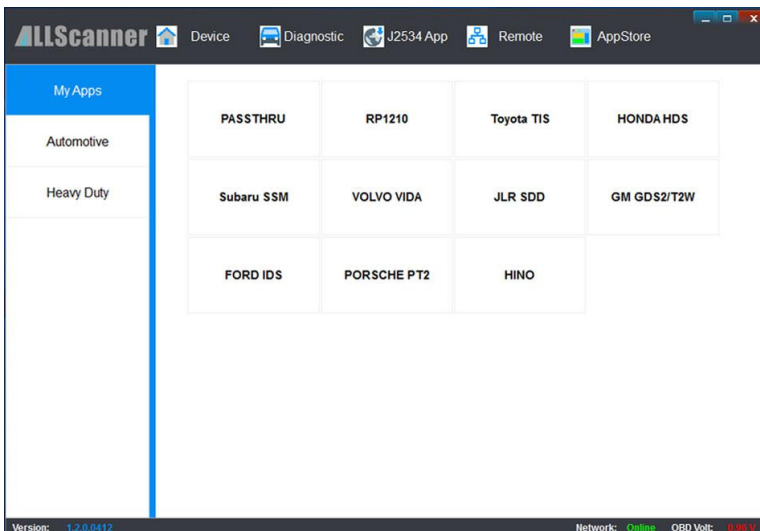
Device License

You can check your license status in "Device License" . You can buy the License from the dealer.



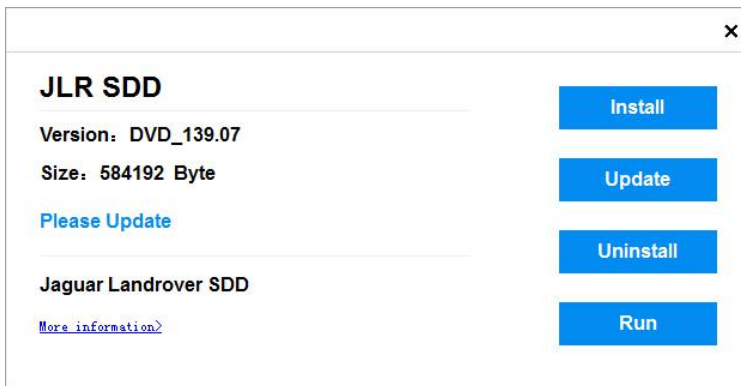
Vehicle Diagnosis

VX Manager can manage multiple original diagnosis functions.



To use the original factory diagnosis functions, you will need to install corresponding vehicle diagnosis driver.

Click an application in vehicle diagnosis window, and you will get a driver installation window.



【Install】 VX Manager will download the newest diagnostic driver from server and install, then you can start to use the original diagnosis function. The installation UI is below:



【Update】 Update installed diagnostic driver from server.

【Uninst】 Uninstall the diagnostic driver.

【Run】 Run the original diagnostic application.

Warranty Terms

One Year Warranty

1. The warranty is valid from the date of dispatch until the end of 1 year. If the invoice is lost, the warranty is valid from the date of manufacture.
2. Warranty covers repairs or replacement of item in the event that the damages are caused by design or material defect or fault of production during the warranty period. The invoice must be presented in order to make this claim.
3. During the warranty period, we will cover the cost of postage for product repairs; after the warranty period, you will be responsible the delivery cost.
4. The warranty offered is strictly for the purchased item only. We will not be held liable for any defects or damage on any other item(s) used in conjunction with this product.
5. The laptop that comes with the product is not built by us. The manufacturer of the laptop is responsible for its after-sale service.
6. We also cover damages excluded in the quality assurance. If accessory replacement is necessary, we will let you know in advance. You will be responsible for the material cost and delivery cost.

General Exclusions (What's NOT Covered):

1. Faults caused by fire, dust, sand, water contamination or ingress, fall or shock, chemical corrosion, blown fuse, theft, dirt, dampness or corrosion, leaky batteries, incorrect use of power supply or other adverse weather conditions.

2. Damages caused by repair or tuning or improper installation or repairs by unauthorized personnel.
3. Damages caused by illegal operation such as reading or changing product programs.
4. Products whose mechanical serial number or electronic serial number has been deleted, changed or damaged.
5. Malfunction caused due to exposure to excessive heat or extreme cold.
6. Wear or damages of qualified parts through natural use.

Service and Support

Technique Support

You can browse the product Wiki from <http://www.vxdiag.net> ,
There was some useful documents and resources:

- VXDIAG Software installation and usage.
- Multiple OE Diagnostic software installation and usage.
- Multiple OE Diagnostic help tutorials and videos.

Repair Service

If your product need repair, Please download and fill out the repair form, Be sure to include the following information :

- Contact name
- Phone number
- Product Serial Number
- Fault description
- Fix Card
- Delivery Address

Other problems can contact us:

Address	103, A Building, Shenzhen Academy of Aerospace Technolgy, 10 South Road, High-tech Zone, Nanshan Dist, Shenzhen, P.R.China
Telephone	+86-0755-33000960
Post	518057
Sales	info@allscanner.com
Support	support@allscanner.com

一般信息



请认真查看产品使用说明书，严格按使用说明书操作产品。

欢迎使用

感谢您选择深圳傲世卡尔科技有限公司的诊断产品，本手册是汽车诊断设备的用户手册，随标准配置提供给用户。

本手册描述了产品信息、硬件连接、软件安装和使用方法等重要信息，请在第一次使用产品前仔细阅读本手册。本手册只说明产品的操作使用方法，具体汽车的维修诊断请参照车辆原厂维修手册进行。

由于产品更新升级，深圳傲世卡尔科技有限公司保留不预先通知用户而变更本手册之内容的权利。

有限责任

傲世卡尔并不保证本产品在使用时不会出现中断和错误。对于任何直接、间接、特殊、意外或由此产生的损坏（包括利润损失），无论是否基于担保、合同、侵权或任何其他法理，傲世卡尔对此概不负责。

版权所有

本手册所有内容版权属于深圳傲世卡尔科技有限公司所有，未经允许，任何个人和公司不得以商业利益为目的，以任何形式对本手册内容进行复制、备份和重新发布！

注册商标

ALLScanner[®] 是深圳傲世卡尔科技有限公司的注册商标。

VXDIAG 是傲世卡尔科技有限公司的产品注册商标。

除上所述，本手册所提及之其它商标均属于其注册公司所有。

产品介绍

产品概述

全新设计的 VXDIAG，首次将三大汽车工业标准集成于一个设备，支持所有主流车辆总线协议，具备强大的兼容性，VXDIAG 是实现众多原厂车辆诊断的最佳设备。

产品特性

一个设备支持众多原厂车辆诊断

- 实现世界主要品牌车型的原厂级诊断功能，一个设备可替代众多昂贵的 OEM 设备
- 各种高级诊断功能与原厂完全一致，性能甚至超出原厂
- 一键安装原厂支持驱动和在线升级，易于使用

全新设计的 VXDIAG 硬件

- 搭载高速处理器的 VXDIAG 是一个高性能的车辆网络接口
- 支持 4 路 CAN BUS，2 路 K-Line/L-Line，实现多协议高速并发通信
- 创新设计的 OBD-II 智能总线多路通信硬件，支持所有标准和原厂车辆总线协议
- 硬件支持 12V 和 24V 汽车通讯，可支持重型和柴油车辆诊断
- 坚固的设计能使用在各种恶劣环境

满足三大汽车工业标准设计

- SAE-J2534-1/2 Pass-Thru Driver with EURO 5
- ISO-22900-1/2 MVCI with D-PDU Driver
- RP-1210A/B/C Heavy Duty VDA Driver

J2534 原厂级 ECU 编程功能

- ECU 软件升级和标定
- ECU 更换刷写和编程

原厂车辆诊断支持

#	OEM	Diagnostic Software	Compatible
1	PASSTHRU	SAE-J2534-1/2 Pass-Thru	YES
2	PORSCHE	Porsche PIWIS-II Tester	YES
3	TOYOTA	TOYOTA Techstream TIS	YES
4	HONDA	HONDA Diagnostic System HDS	YES
5	SUBARU	SUBARU Select Monitor SSM	YES
6	VOLVO	VOLVO VIDA	YES
7	JLR	Jaguar & Land Rover SDD	YES
8	CHRYSLER	Chrysler wiTECH Diagnostic	YES
9	GM	GM GDS2	YES
10	GM	GM Tech2Win	YES
11	FORD	FORD IDS	YES
12	MAZDA	MAZDA IDS	YES
13	KIA	KIA GDS	YES
14	HYUNDAI	HYUNDAI GDS	YES
15	MMC	Mitsubishi MUT-III	YES
16	NISSAN	* NISSAN Consult-III Plus	YES
17	SUZUKI	* Suzuki SDT-II	YES
18	VAG	* VW & AUDI ODIS	YES
19	BMW	* BMW RHEINGOLD ISTA/D	YES
20	BENZ	* BENZ XENTRY	YES
21	FERRARI	* Ferrari DEIS Tester	YES
22	MASERATI	* Maserati EASY Diagnosi	YES

重型车辆诊断支持

#	OEM	Diagnostic Software	Compatible
1	VOLVO	Volvo/Mack PTT & VCADS Pro	YES
2	CUMMINS	Cummins INSITE	YES
3	CAT	CAT ET Electronic Technician	YES
4	DETROIT	Detroit DDDL & DDRS	YES
5	HINO	HINO Diagnostic eXplorer	YES
6	ISUZU	ISUZU IDSS	YES
7	NISSANUD	Nissan UD	YES

8	ALLISON	Allison DOC	YES
9	BENDIX	Bendix ACOM	YES
10	EATON	Eaton ServiceRanger	YES
11	FREIGHTL	Freightliner ServiceLink	YES
12	INTERNAL	International ServiceMAXX and more...	YES
13	WABCO	WABCO Toolbox	YES
14	PERKINS	Perkins OLYMPIAN EST	YES
15	MAN	*MAN-Cats II	YES
16	SCANIA	*Scania SDP3	YES
17	JCB	*JCB ServiceMaster	YES
18	DETUZ	*DETUZ Serdia	YES

车辆总线协议

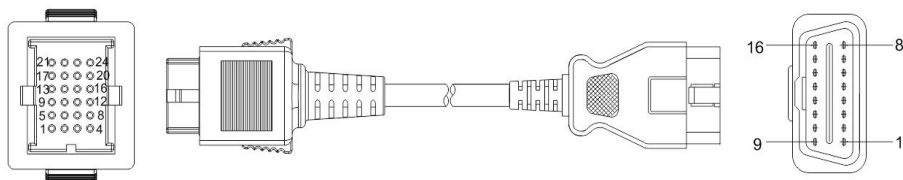
支持汽车诊断协议	ISO-9141 K-Line ISO-14230 K-Line ISO-15765 CAN SAE-J1850-VPW (GM Class2) SAE-J1850-PWM (FORD SCP) ISO-11898-2 DWCAN ISO-11898-3 DWFTCAN SAE-J2411 Single Wire CAN (GMLAN) VAG TP16 CAN VAG TP20 CAN (SAE-J2819) VAG KW81 (SAE J2818) SAE-J2610 SCI (Chrysler) SAE-J1567 CCD BUS (Chrysler) SAE-J2740 GM ALDL SAE-J2809 (HONDA DIAG-H) NISSAN DDL UART with CLOCK
----------	---

	BMW DS2 FORD UBP
支持重型车辆诊断协议	CAN125/CAN250/CAN500/CAN1000 SAE-J1939 CAN SAE-J1708/J1587 On RS485 CAT DATALINK (Caterpillar) ATA DATALINK (Caterpillar)

技术规格

项目	描述
处理器	32bit 180MHz ARM 处理器
存储器	1M Byte
有线接口 (PC)	USB 2.0
网络接口 (PC) (选配)	LAN 10/100M 以太网
无线接口 (PC) (选配)	WLAN 802.11 b/g/n 无线网络
诊断接口 (车辆)	24PIN 高可靠易插拔接口转 OBD-II 16PIN
指示灯	4 个 LED 指示灯：电源，无线，通信和车辆。
供电	车辆电源输入：DC 9V-36V 兼容 12V 和 24V
功耗	2W
尺寸	L x W x H = 175 x 110 x 45 (mm)
重量	设备重量：0.6Kg 产品+工具箱+包装重量：2.3Kg
外壳	铝金属+加固型塑胶外壳
工作温度	-20 ~ +70 °C
储存温度	-40 ~ +85 °C
标准认证	符合欧盟 CE 和美国 FCC

接口定义



CON24	默认定义	OBD-II
1	Signal	1
17	Signal	2
2	Signal	3
24	GND	4
24	GND	5
3	Signal	6
4	Signal	7
5	Signal	8
6	Signal	9
18	Signal	10
7	Signal	11
8	Signal	12
9	Signal	13
10	Signal	14
11	Signal	15
16	VBAT	16

OBD-II 支持的总线协议覆盖(可通过软件切换)

	1	2	3	6	7	8	9	10	11	12	13	14	15
HSCAN				H								L	
PSCAN	H/L	H/L	H/L	H/L	H/L	H/L	H/L	H/L	H/L	H/L	H/L	H/L	H/L
SWCAN	X	X	X	X	X	X	X	X	X	X	X	X	X
FTCAN	H/L	H/L	H/L	H/L	H/L	H/L	H/L	H/L	H/L	H/L	H/L	H/L	H/L
PWM		H						L					
VPW		X											
KBUS1	X	X	X	X	X	X	X	X	X	X	X	X	X
KBUS2	X	X	X	X	X	X	X	X	X	X	X	X	X
Analog	X	X	X	X	X	X	X	X	X	X	X	X	X
J1708		H						L		L	H		

H: High for Differential signal.

L: Low for Differential signal.

H/L: High or Low for Differential signal.

X: Supported signal.

产品预览



设备工作状态（红色）



无线网络状态（蓝色）



主机通信状态（蓝色）



车辆通信状态（蓝色）

产品附件



设备



USB 通信电缆



OBD-II 诊断电缆



工具箱和包装



光盘，用户手册，保修卡

软件安装

系统需求

您的 PC 需要满足以下条件：

- 处理器：奔腾 4/2GHz 或以上。
- 内存：2G Bytes 或以上。
- 硬盘：40G 或以上。
- 显示：分辨率 1024x768 或以上。
- 网络接口：LAN 10/100M 或 802.11b/g。
- 通信接口：USB2.0 或 USB3.0
- 操作系统：Windows XP / Vista / Win7 / Win8 / Win8.1。

软件安装

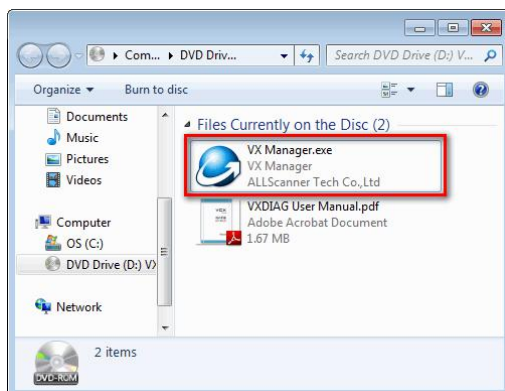
使用设备开始汽车诊断之前，PC 上必须安装 VX Manager 管理工具和驱动程序，此安装程序包含在产品 CD-ROM 中，或者您可通过 <http://www.vxdiag.net> 下载最新版本安装程序。



请停用或关闭杀毒防护软件，并以管理员权限运行安装程序。

1

请运行 VX Manager 安装程序



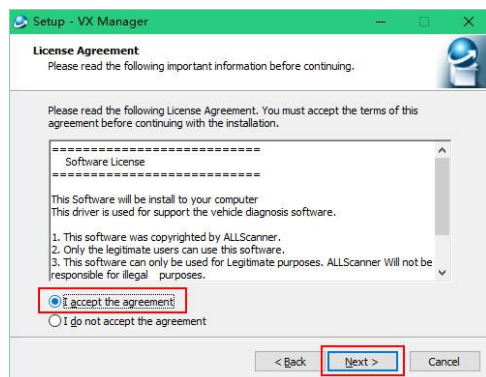
2

点击 [Next]



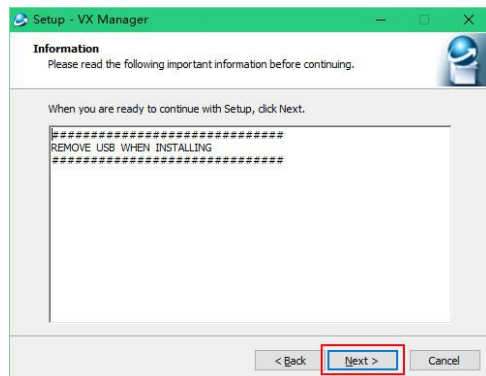
3

选择 [I accept the agreement] 然后点击 [Next]



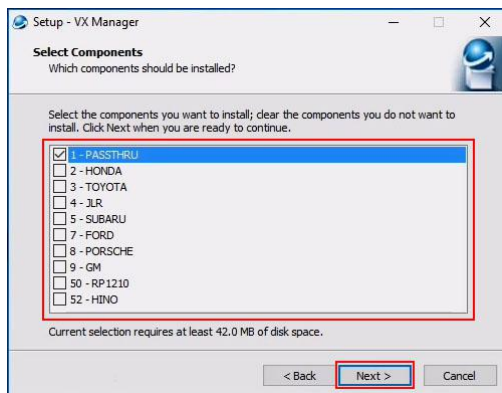
4

安装过程中请不要连接 USB 接口到计算机，然后点击 [Next]



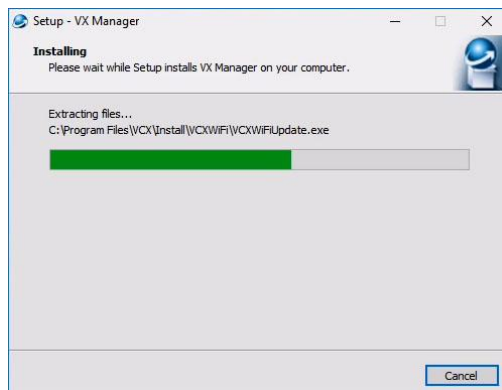
5

选择要安装的原厂诊断驱动，
然后单击 [Next]



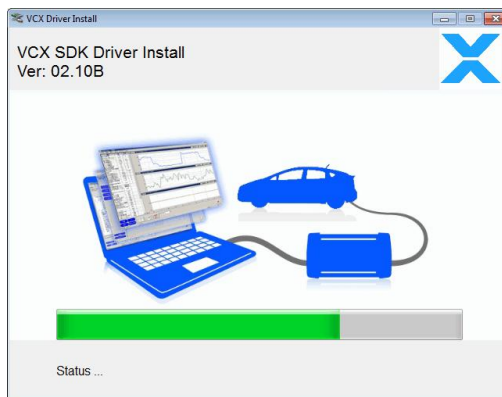
6

正在安装软件.....



7

正在安装驱动程序.....



8

正在安装原厂诊断驱动.....
安装完成后，单击 [Close]



9

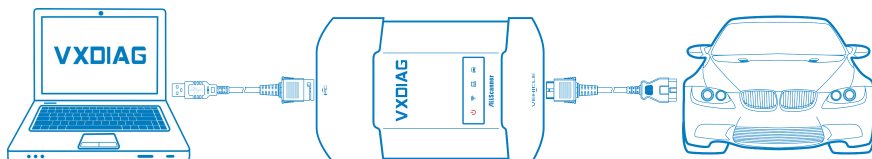
安装完成，将在桌面和开始
菜单生成快捷方式



开始使用

硬件连接

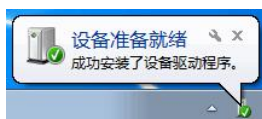
开始使用设备之前，必须正确连接硬件：设备车辆端通过 OBD-II 诊断电缆连接至车辆，设备 PC 端通过 USB 通信电缆连接至 PC；



正确连接硬件后设备指示灯将依次闪烁，最后电源指示灯保持常亮，并且设备会有蜂鸣声提示。

安装 USB 驱动 Windows 7 / 8 / 8.1 / 10

第一次连接 USB 电缆到 PC 时，Windows 会提示找到新硬件，并自动完成驱动程序安装。



安装 USB 驱动 Windows XP

第一次连接 USB 电缆到 PC 时，Windows 会提示找到新硬件：



随后会出现“找到新硬件向导”，请按以下步骤完成驱动程序安装：

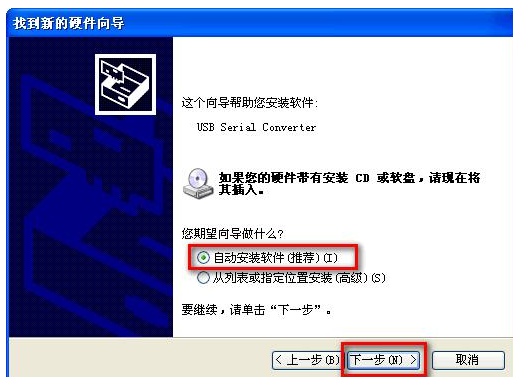
1

选择“否，暂时不”选项。
点击【下一步】继续。



2

选中“自动安装软件”选项
点击【下一步】继续。



3

出现硬件安装对话框, 点击
【仍然继续】按钮。

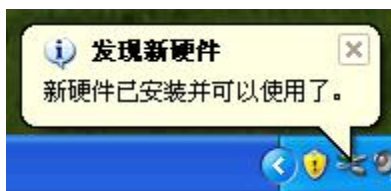


4

完成找到新硬件向导。点击【完成】继续。



此后会出现第二次“找到新硬件向导”，安装方法同上。
USB 驱动程序安装完成：



正确安装 USB 驱动程序后，PC 指示灯会开始闪烁

WiFi 连接

设备车辆端通过 OBD-II 诊断电缆连接至车辆，PC 通过 WiFi 连接至设备。



请按以下步骤完成 WiFi 连接：

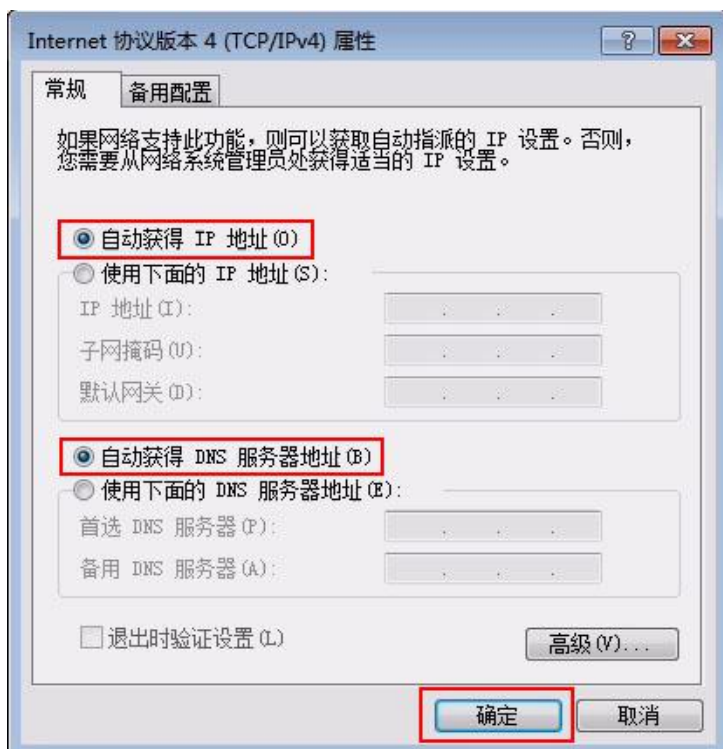
1

在 PC 上搜索名称为 VCX-WiFi 的无线网络,选中 [自动连接], 然后单击[连接]



2

连接上 VCX-WiFi 后, 设置为自动获取 IP 地址



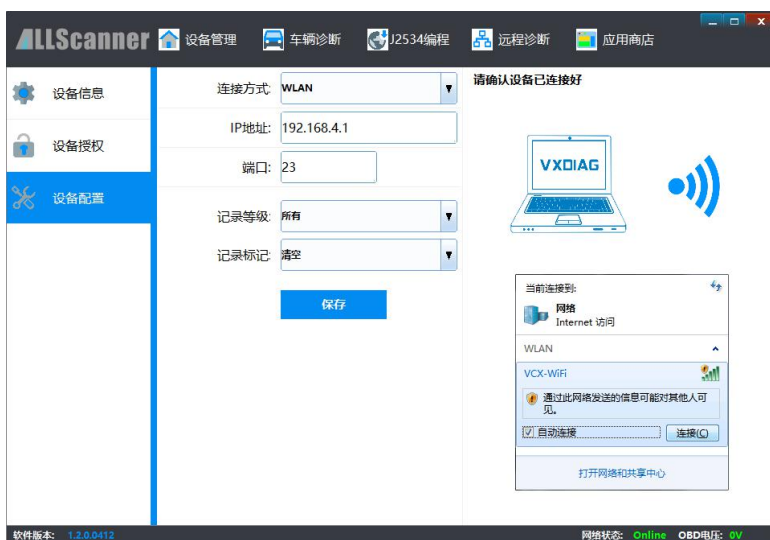
3

双击桌面上的 VX Manager 快捷方式，运行 VX Manager



4

选择[设备管理]选项卡，单击[设备配置]，连接方式选择[WLAN]，然后单击[保存]



5

双击桌面上的 VX Manager 快捷方式，重启 VX Manager，
PC 已通过 WiFi 连接到设备



VX Manager 管理工具

请确保设备已连接正确。打开 VX Manager 软件，【设备管理】界面会显示设备的基本信息：



基本功能



重新连接

重新与设备建立连接



更新固件

通过互联网在线更新设备中的固件



更新授权

通过互联网在线更新设备中的授权



重启设备

设备复位并重新启动运行



设备自检

运行设备自检程序并显示设备检测报告

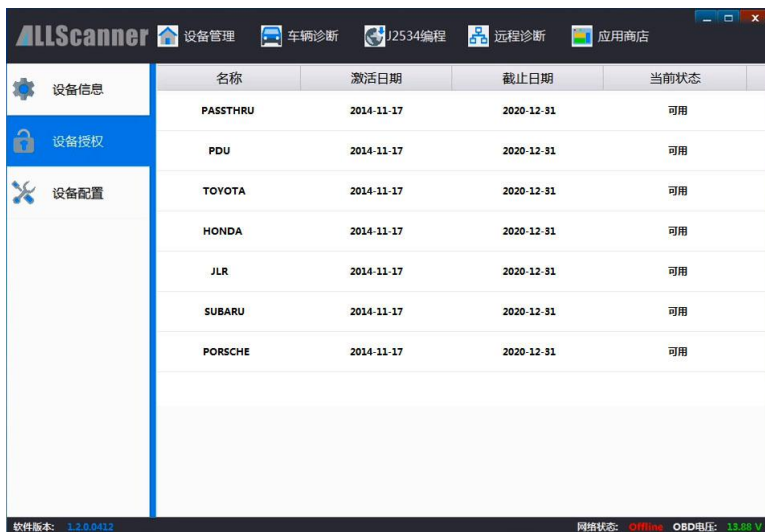


硬件测试

设备指示灯闪烁并且发出蜂鸣提示音

设备授权

点击进入【设备授权】页面，可查看设备已有的授权。原厂诊断功能需要授权才能使用，购买授权请联系经销商。

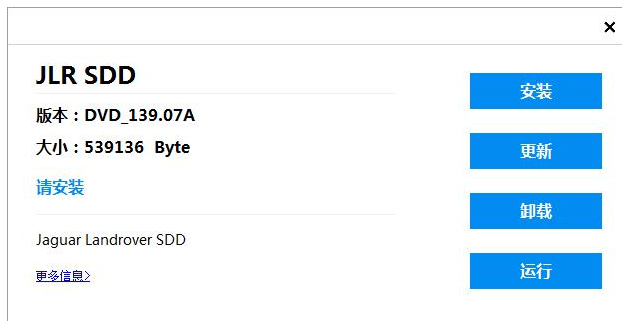


车辆诊断

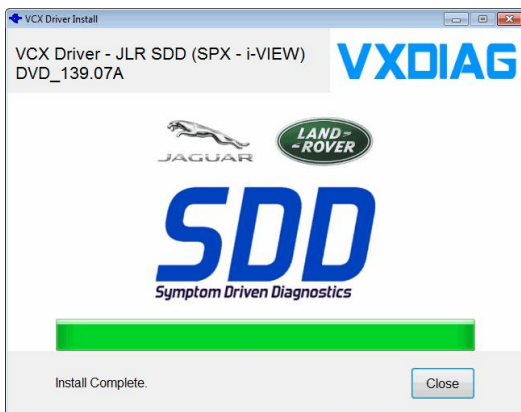
点击进入【车辆诊断】页面，可以管理多种原厂诊断应用。



要使用原厂车辆诊断功能，需要安装相应车辆的诊断驱动。在车辆诊断界面点击某个应用，则会弹出驱动安装界面：



【安装】 VX Manager 将从服务器获取最新的诊断驱动并安装，之后您就可以开始使用原厂诊断功能。安装界面如下：



【更新】 从服务器获取更新的诊断驱动并更新已安装的原厂诊断功能。

【卸载】 卸载已安装的原厂诊断功能。

【运行】 运行原厂诊断软件。

保修条款

一年有限保修

1. 产品质保期为一年，保修起始时间和终止时间，依据供货发票日期，若发票丢失则按照出厂日期计算购买时间。
2. 产品质保期内正常使用状况下，本产品或任何零部件证明存在设计、材料或工艺缺陷导致的产品损坏，凭保修卡，本公司将根据情况免费维修或更换（新产品或改造的部件）。
3. 质保期内返修运费由供货方支付，质保期过后返修运费由用户承担。
4. 保修服务仅限于设备本身，对设备以外的其它损失公司概不负责。
5. 非本公司直接装配的电脑设备，则电脑部分的售后服务，由该供应商负责。
6. 不在质保范围之损坏，傲世卡尔公司也同样为客户进行正常保修，不收取维修费用，若发生更换材料先通知用户认可后进行，材料成本费用、运输费用由用户承担。

保修不适用于以下情况：

1. 任何因异常使用或异常情况，如火灾、泥土、沙子、进水、跌落或挤压、化学物质腐蚀、保险丝熔断、被盗、电源使用不当、遇不可抗拒之自然灾害等而造成的产品损坏；
2. 擅自拆装、更改、安装维修不当造成的损坏；
3. 非法目的操作，如：读取或更改设备内程序之类造成的损坏；
4. 机械序列号或电子序列号已被删除、更改或损毁的产品；
5. 因暴露在高温或极端环境；
6. 符合国家相关产品质量规定的情况下的正常零部件自然磨损或损坏；

服务与支持

技术支持

你可以访问 <http://www.vxdiag.net> 网站中的 Wiki 技术文档中心，其中包含所有重要的文档资源：

- VXDIAG 软件安装和使用
- 各种原厂诊断软件介绍和安装
- 各种原厂诊断软件测车案例和视频

维修服务

如果设备需要返修，请下载并填写维修服务表。请务必填写以下信息：

- 联系人姓名
- 电话号码
- 产品序列号
- 问题描述
- 保修卡
- 回寄地址

请按以下方式联系我们：

地址	深圳市南山区高新南区科技南十路 6 号深圳航天科技创新研究院 A 座一层 A103-104 室
电话	+86-0755-33000960
邮编	518057
产品咨询	info@allscanner.com
技术支持	support@allscanner.com



Copyright © 2008-2015

All rights reserved.

<http://www.allscanner.com>